

## Power Lightning Module for PCB Board Welding Protection

Model No.: FMP10D-500PVS

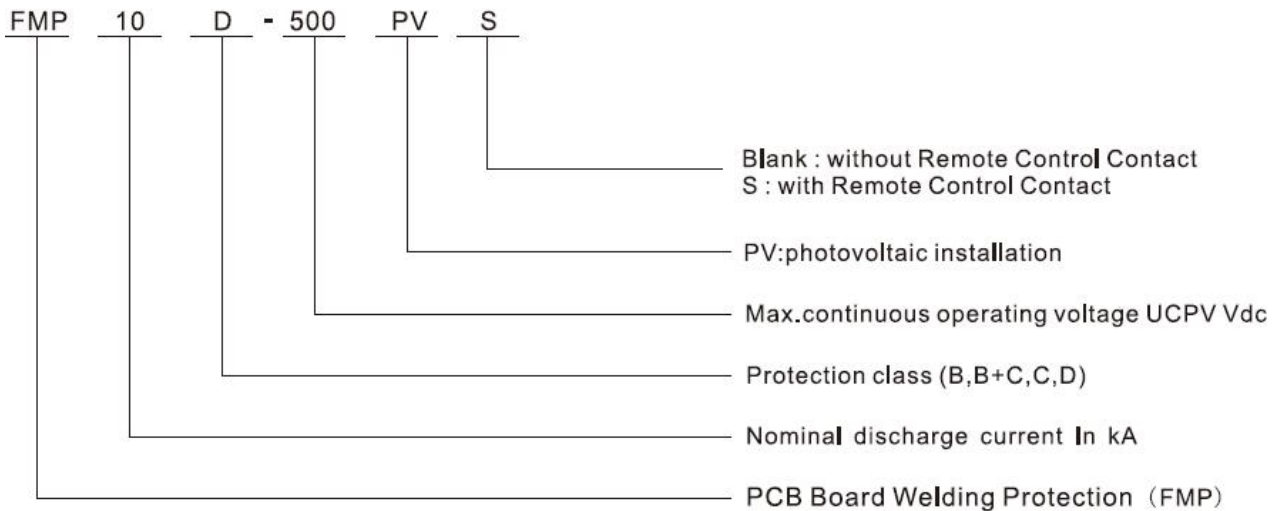
Version: B-3



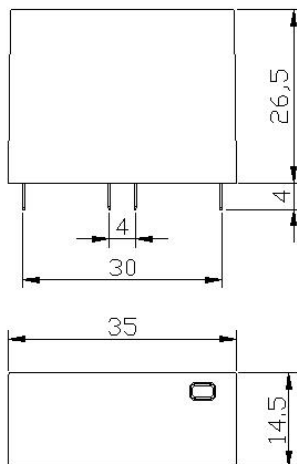
- **Power Lightning Protection Module** specially used for photovoltaic system less than 500Vdc.
- The core parts are metal oxide varistor components with high discharge capacity.
- With reliable control thanks to Thermo Dynamic Control disconnecter.
- With remote signaling contact for control device.
- Fault indication via red mark in the inspection window.

### 1. Coding

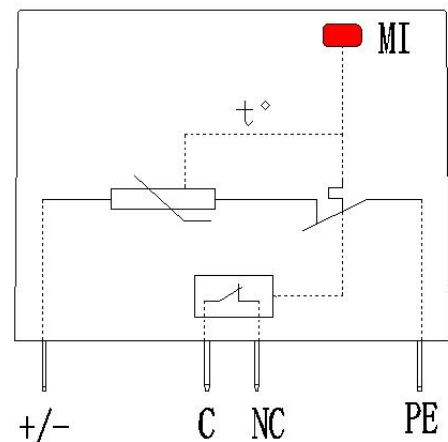
Power Lightning Module for PCB Board Welding Protection



### 2. Dimension



### 3. Circuit



## FATECH ELECTRONIC (FOSHAN) CO., LTD.

Add: Chuangda Industrial Zone, Leliu Street, Shunde, Foshan City, Guangdong Province, China.

Tel: +86 757 86718031 Fax: +86 757 83557686

Web: [www.fatech-surge-protection.com](http://www.fatech-surge-protection.com), [www.fatech-spd.cn](http://www.fatech-spd.cn)

Email: [sales@fatech-surge-protection.com](mailto:sales@fatech-surge-protection.com), [sales@fatech-spd.cn](mailto:sales@fatech-spd.cn)

#### 4. Electrical parameters

Model. No.	FMP10D-500PVS
SPD protection conforms to EN50539-11/IEC61643-31	Type 3
SPD installation type conforms to EN50539-11/IEC61643-31	Class III
Protection level conforms to DIN VDE0675-6	D
Type of Network	Photovoltaic systems DC side
Protection mode	(+/-) -(-/+), (+/-)-PE, (-/+)-PE
Nominal Voltage $U_N$	500 Vdc
Maximum continuous operating voltage for PV application $U_{CPV}$	560 Vdc
Continuous operating current $I_{CPV}$	<20 $\mu$ A
Standby power consumption $P_C$	$\leq$ 25 mVA
Maximum discharge current (8/20 $\mu$ s) $I_{max}$	20 kA
Nominal discharge current (8/20 $\mu$ s) $I_n$	10 kA
Voltage protection level $U_p$	$\leq$ 1.8 kV
Open circuit voltage $U_{oc}$	20 kV
DC short circuit breaking capacity	50A/800VDC
Rated short-circuit current for photovoltaic applications - $I_{scpv}$	50A
Isolation resistance $R_{isol}$	> 1000 M $\Omega$
Response time $t_A$	$\leq$ 25 ns
Remote control contact	YES
Disconnection indicator	Mechanical indicator (Green: OK, Red: Replace)
Alarm device	Normally closed during normal time, often open when abnormal
Installation location	Inside
Mounting type	PCB Board Welding
Color	Gray
Housing material	UL94V-0
Ambient temperature	-40°C ~+80°C
Altitude	$\leq$ 2000 m (amsl (above mean sea level))

#### FATECH ELECTRONIC (FOSHAN) CO., LTD.

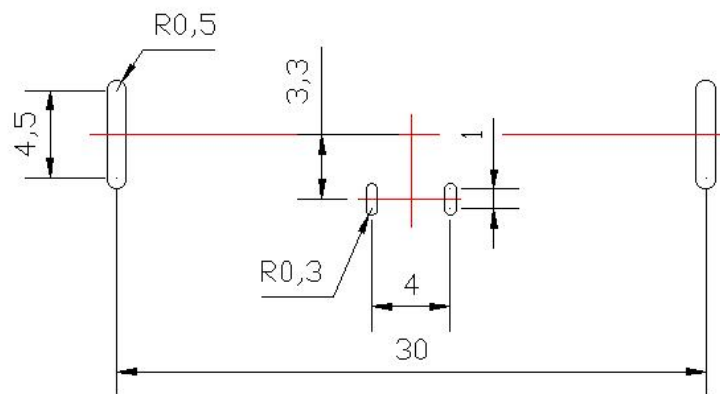
Add: Chuangda Industrial Zone, Leliu Street, Shunde, Foshan City, Guangdong Province, China.

Tel: +86 757 86718031 Fax: +86 757 83557686

Web: [www.fatech-surge-protection.com](http://www.fatech-surge-protection.com), [www.fatech-spd.cn](http://www.fatech-spd.cn)

Email: [sales@fatech-surge-protection.com](mailto:sales@fatech-surge-protection.com), [sales@fatech-spd.cn](mailto:sales@fatech-spd.cn)

## 5. Installation



PCB Drilling Diagram

### FATECH ELECTRONIC (FOSHAN) CO., LTD.

Add: Chuangda Industrial Zone, Leliu Street, Shunde, Foshan City, Guangdong Province, China.

Tel: +86 757 86718031 Fax: +86 757 83557686

Web: [www.fatech-surge-protection.com](http://www.fatech-surge-protection.com), [www.fatech-spdcn.com](http://www.fatech-spdcn.com)

Email: [sales@fatech-surge-protection.com](mailto:sales@fatech-surge-protection.com), [sales@fatech-spdcn.com](mailto:sales@fatech-spdcn.com)