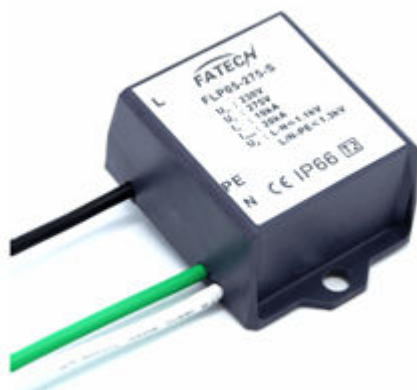


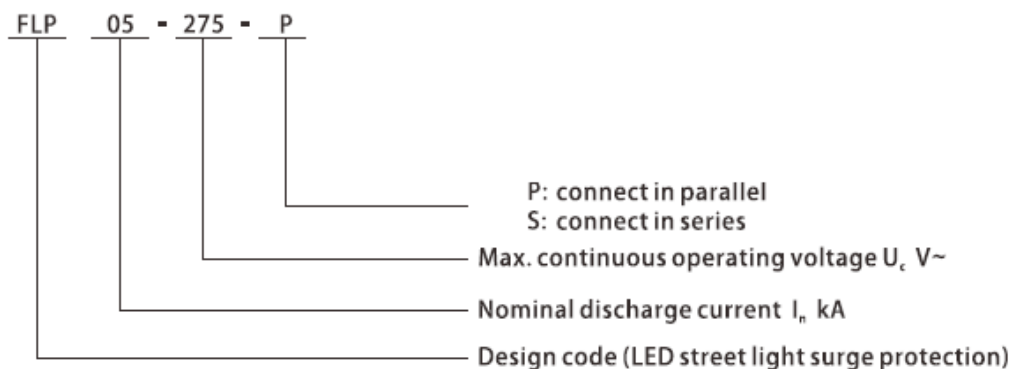
20KA LED street light surge protection module

Model No.: FLP10-xxx-x/xx

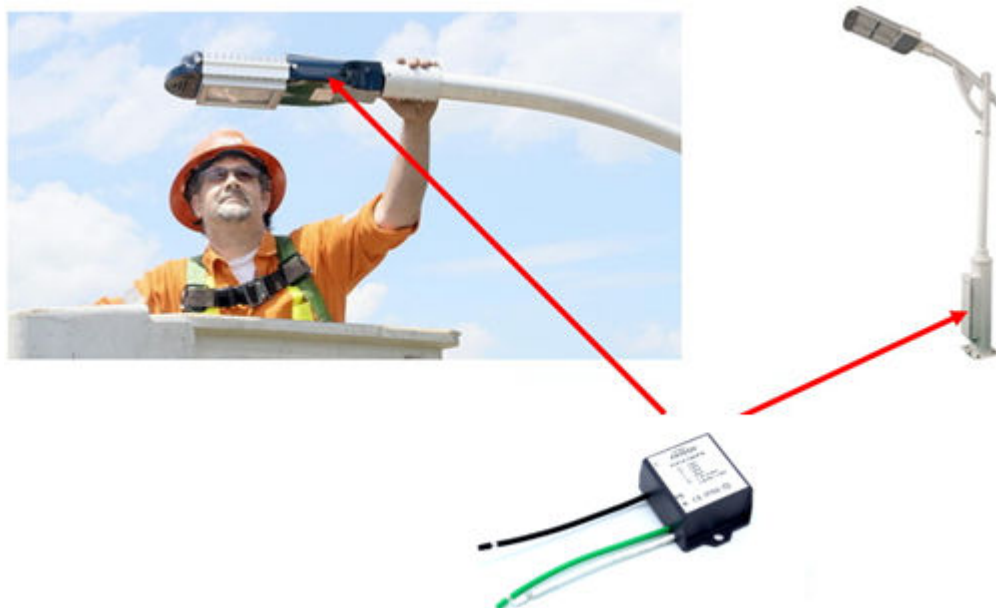


- New designed LED lighting surge protection module.
- specifically for outdoor and commercial LED lighting applications, LED signage and traffic light manufacturers, including roadway lighting, parking garage lighting, wash wall lighting, traffic lighting, flood lighting, digital signage, street lightning, and tunnel lighting.
- 10kA lightning surge protection.- Metal oxide varistor (MOV) thermal protection.
- Parallel connected and series connected SPD options.
- Waterproof IP66.

1. Coding



3. Proposition of LED street light surge protection module



FATECH ELECTRONIC (FOSHAN) CO., LTD.

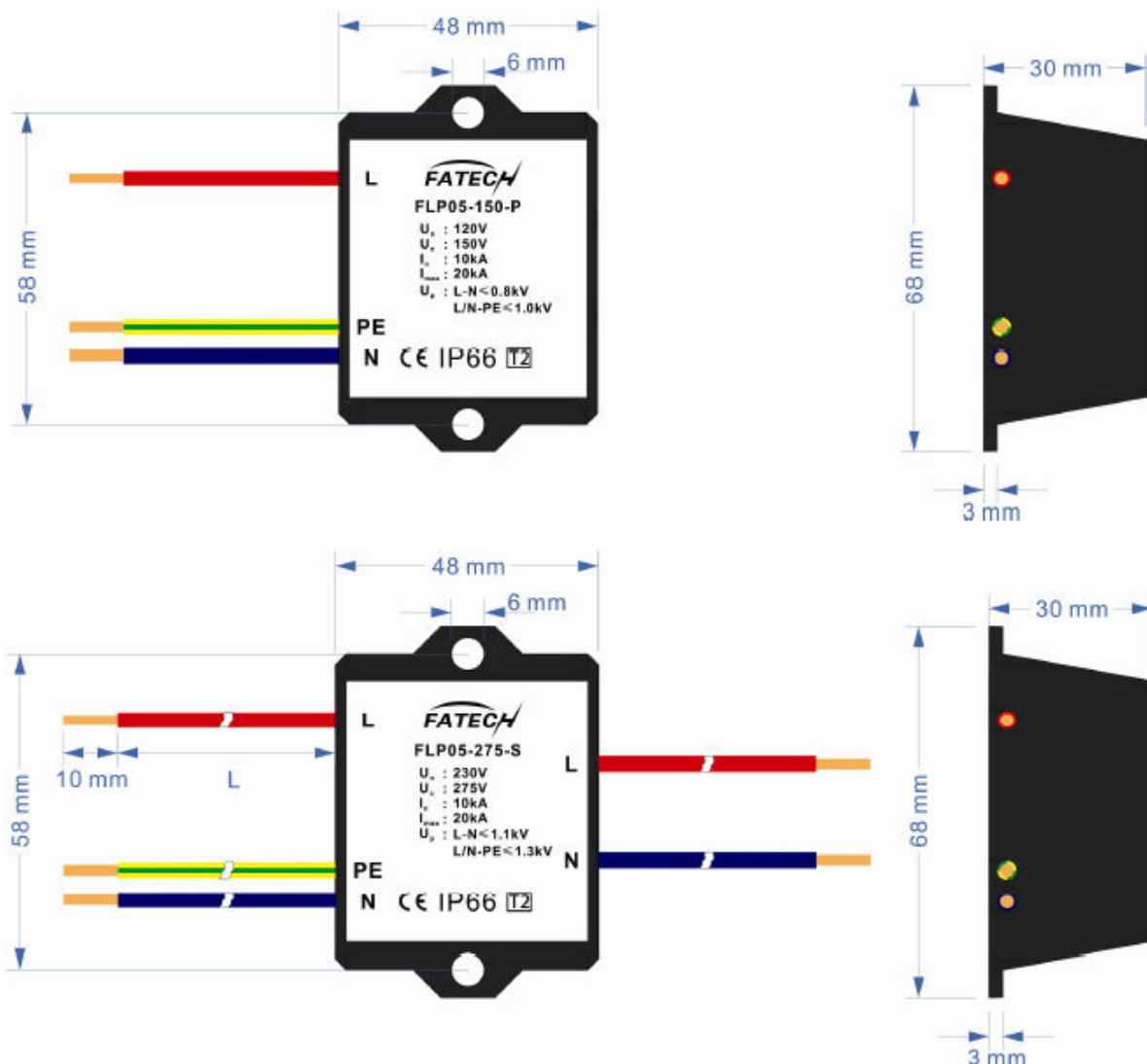
Add: Bldg D7, Guangdong New Light Production Base, Luocun, Shishan Town, Nanhai District, Foshan City, Guangdong China.

Tel: +86 757 86718031 Fax: +86 757 83557686

Web: www.fatech-surge-protection.com, www.fatech-spd.cn

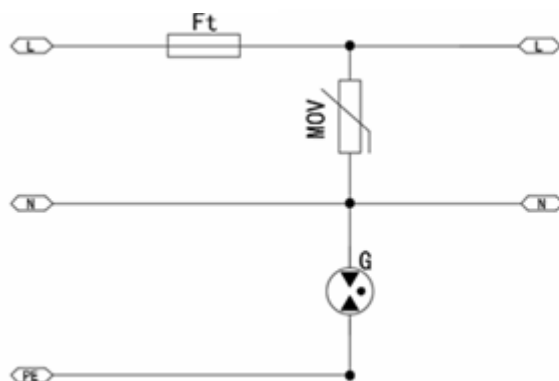
Email: sales@fatech-surge-protection.com, sales@fatech-spd.cn

2. Dimension of LED street light surge protection module

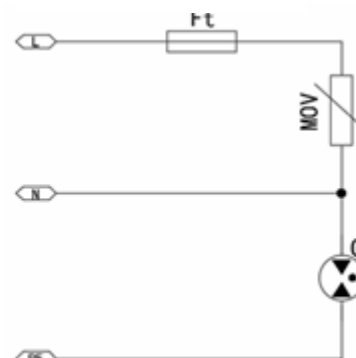


5. Circuit of LED street light surge protection module

FLP05-XXX-S



FLP05-XXX-S



4. Electrical parameter of LED street light surge protection module

FATECH ELECTRONIC (FOSHAN) CO., LTD.

Add: Bldg D7, Guangdong New Light Production Base, Luocun, Shishan Town, Nanhai District, Foshan City, Guangdong China.

Tel: +86 757 86718031 Fax: +86 757 83557686

Web: www.fatech-surge-protection.com, www.fatech-spd.cn

Email: sales@fatech-surge-protection.com, sales@fatech-spd.cn

Model No.				FLP05-150-x	FLP05-275-x	FLP05-320-x	FLP05-385-x
Rated Voltage		U_N	VAC	110	230	230	380
Max. continuous operating voltage		U_C	VAC	150	275	230	385
Nominal discharge current(8/20 μ s)		I_n	kA	5			
Max. discharge current (8/20 μ s)		I_{max}	kA	10			
Voltage protection level	L-N	U_p	kV	≤ 0.8	≤ 1.1	≤ 1.3	≤ 1.5
	L/N-PE			≤ 1.0	≤ 1.3	≤ 1.5	≤ 1.7
Response time	L-N	tA	ns	$\leq 25ns$			
	L/N-PE			$\leq 100ns$			
Recommended back-up fuse			A	16			
Thermal Cut-off Member				Internal			
Protection Mode				L-N, L-PE, N-PE			
Fault indication				Series type: LED indicator with outer circuit			
Operation temperature range				$-40^{\circ}C \sim +85^{\circ}C$			
Degree of protection				IP66			
Housing material				UL94V0			

FATECH ELECTRONIC (FOSHAN) CO., LTD.

Add: Bldg D7, Guangdong New Light Production Base, Luocun, Shishan Town, Nanhai District, Foshan City, Guangdong China.

Tel: +86 757 86718031 Fax: +86 757 83557686

Web: www.fatech-surge-protection.com, www.fatech-spdcn

Email: sales@fatech-surge-protection.com, sales@fatech-spdcn