

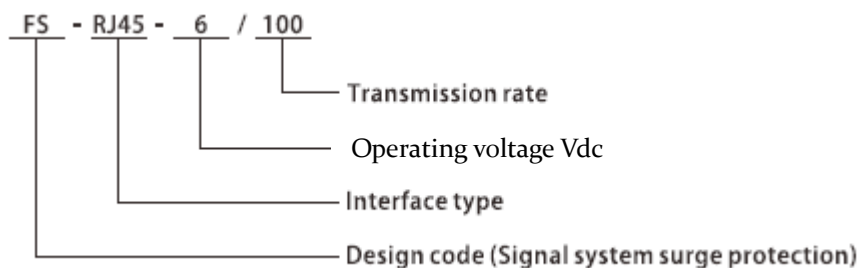
RJ45 signal surge protective device

Model No.: FS-RJ45-6/100

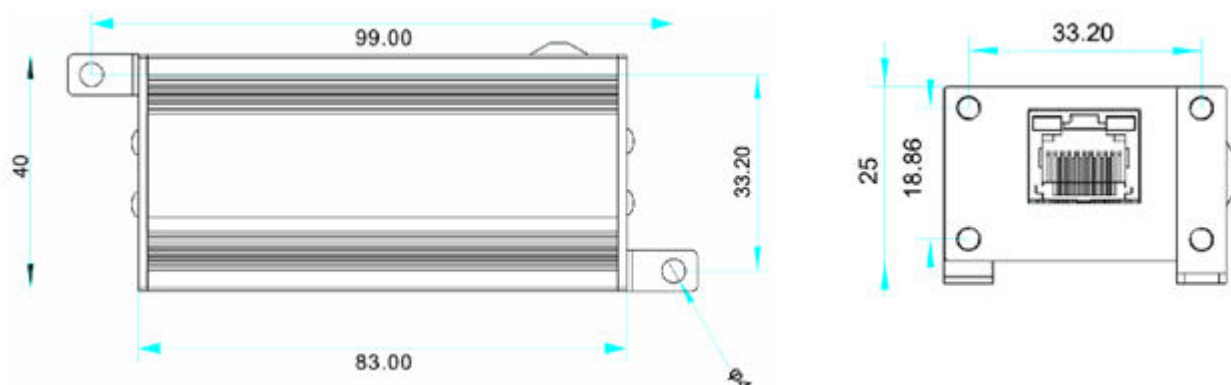


- RJ45 signal surge protective devices are applied to the protection against inductive over voltage, power interference & electrostatic discharge (ESD) for sensitive lines of telecommunications. e.g. computer network equipment, switches, routers, HUBs & MODEMs.
- Convenient mounting
- Low insertion loss, low residual voltage
- Built-in semiconductor, quick response
- Low capacitance design, excellent transmission
- Can be designed and manufactured according to special requests of clients.

1. Coding



2. Dimension



FATECH ELECTRONIC (FOSHAN) CO., LTD.

Add: Bldg D7, Guangdong New Light Production Base, Luocun, Shishan Town, Nanhai District, Foshan City, Guangdong China.

Tel: +86 757 86718031 Fax: +86 757 83557686

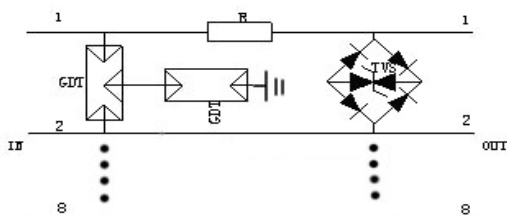
Web: www.fatech-surge-protection.com, www.fatech-spd.cn

Email: sales@fatech-surge-protection.com, sales@fatech-spd.cn

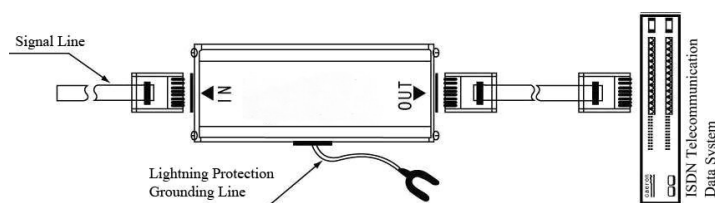
3. Electrical parameter

| | | |
|---------------------------------|---------------------------|--------------|
| Model No. | FS-RJ45-6/100 | |
| Operating voltage | Un | 6V |
| Max. cont. operating DC voltage | Uc | 8V |
| Rated current | | 500mA |
| Nominal discharge current | In (8/20μs) | 1.5 kA |
| Max. discharge current | I _{max} (8/20μs) | 3.0 kA |
| Voltage protection level | L/L (1.2/50μs) | ≤ 20V |
| | L/PE (1.2/50μs) | ≤ 250V |
| Adapt transmission rate | Bit/s | 100 M |
| Insertion loss | dB | ≤ 1.0 (100M) |
| Interface | (In/Out) | RJ45 |
| Protected line (Pairs) | 1,2/3,6/4,5/7,8 | |
| Response Time | L/L | ≤10ns |
| | L/PE | ≤10ns |
| Dimension | 25×40×83mm | |
| Operating temperature | -25℃~+70℃ | |
| Storage temperature | -40℃~+85℃ | |
| Relative humidity | ≤95% | |
| Operating environment | Indoor or dry | |
| Material / Color | Aluminum Shell / Blue | |
| Testing standard | IEC 61643-21:2000 | |

4. Circuit



5. Installation



FATECH ELECTRONIC (FOSHAN) CO., LTD.

Add: Bldg D7, Guangdong New Light Production Base, Luocun, Shishan Town, Nanhai District, Foshan City, Guangdong China.

Tel: +86 757 86718031 Fax: +86 757 83557686

Web: www.fatech-surge-protection.com, www.fatech-spd.cn

Email: sales@fatech-surge-protection.com, sales@fatech-spd.cn